



Nom du produit \*

## Arrache rotules modèles avec levier






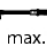
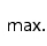


Pour l'arrachage de pivots à rotules lors du démontage de rotules, ainsi que de têtes de barres d'accouplement, sur des véhicules particuliers et camionnettes légères.

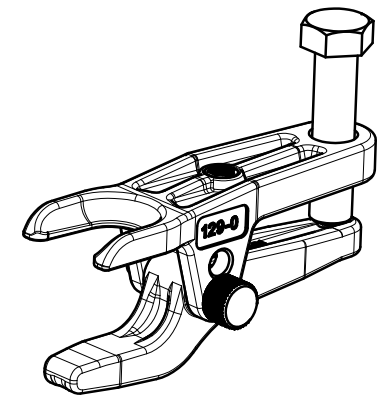
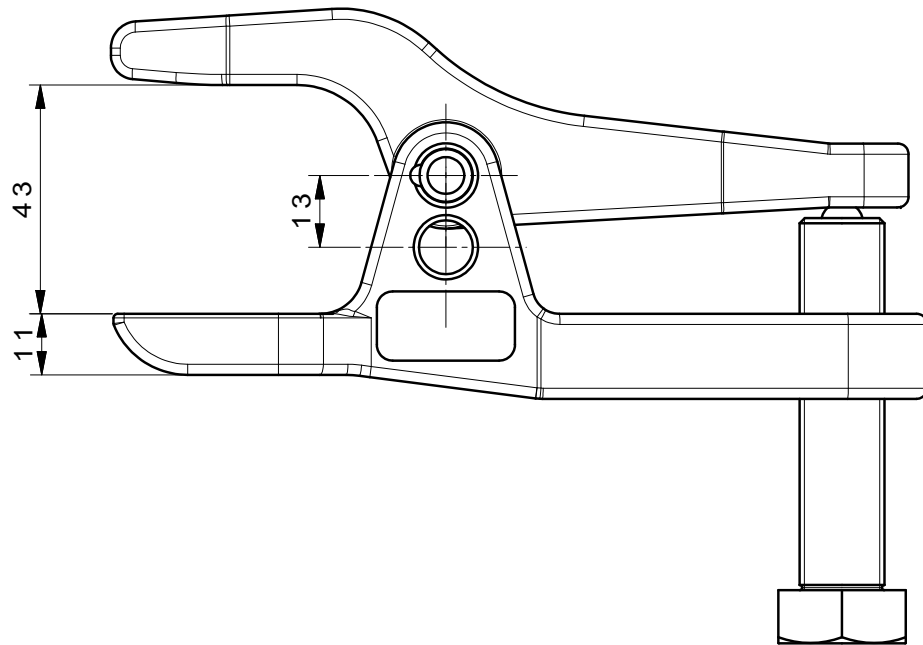
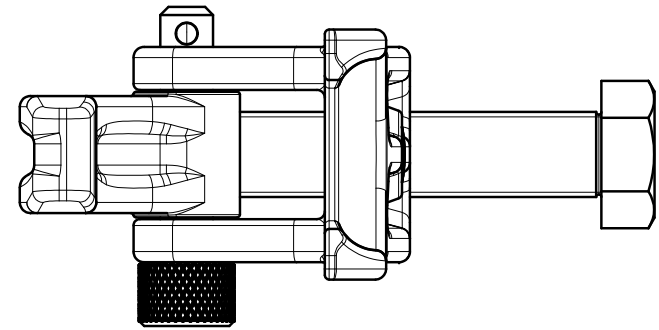
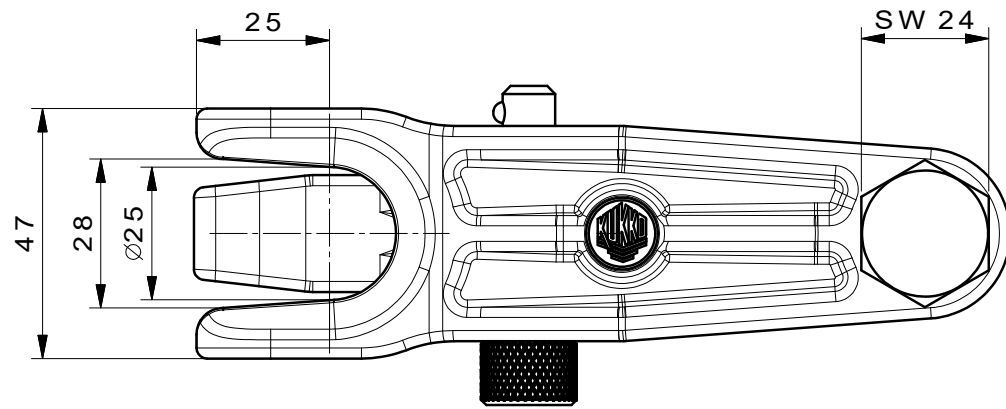
Réf. 129-0-25


Gammes 129

Code à barre 4021176989667



	Caractéristique technique	Métrique	Impérial
	Ouverture de fourche	25 mm	1 inch
	Zone de serrage du levier	50 mm	2 inch
	Pour rotules de la taille nominale	27 - 30 mm	
	Utilisation	VAG, universal, kleinere Modelle / smaller models	VAG, universal, kleinere Modelle / smaller models
	Poids	1.26 kg	
	Moment de couple max.	45 Nm	33.1 ft lb
	Charge maximale admissible	6,5 t	7.1 US t
	Hauteur de mâchoire min.	3,3 - 11,5 mm	1/8 - 1/2 inch
	Hauteur de mâchoire max.	mm	inch



 <b>Kleinbongartz &amp; Kaiser oHG</b> Werkzeugfabrik Hilden - Germany	Dokumentname: 129-0-25_Kugelenk-Ausdrücker		Toleranz: DIN ISO 2768-m
	Dokumentbeschreibung: BAUGRUPPENZEICHNUNG		Material: Hoch legierter Werkzeugstahl / High alloy tool steel
Erstellt von: Breidenbach	Erstellungsdatum: 07/12/2016	Maßstab: 1:1	
Teilbeschreibung: Kugelenk-Ausdrücker mit Hebelübersetzung für PKW/ Adjustable ball joint extractors lever type			Wärmebehandlung / Härte: vergüteter Stahl/ tempered steel
Oberflächenbehandlung:			Schutzvermerk ISO 16016 beachten
Artikelnummer / ZNR.: 129-0	Dokumentversion: -		